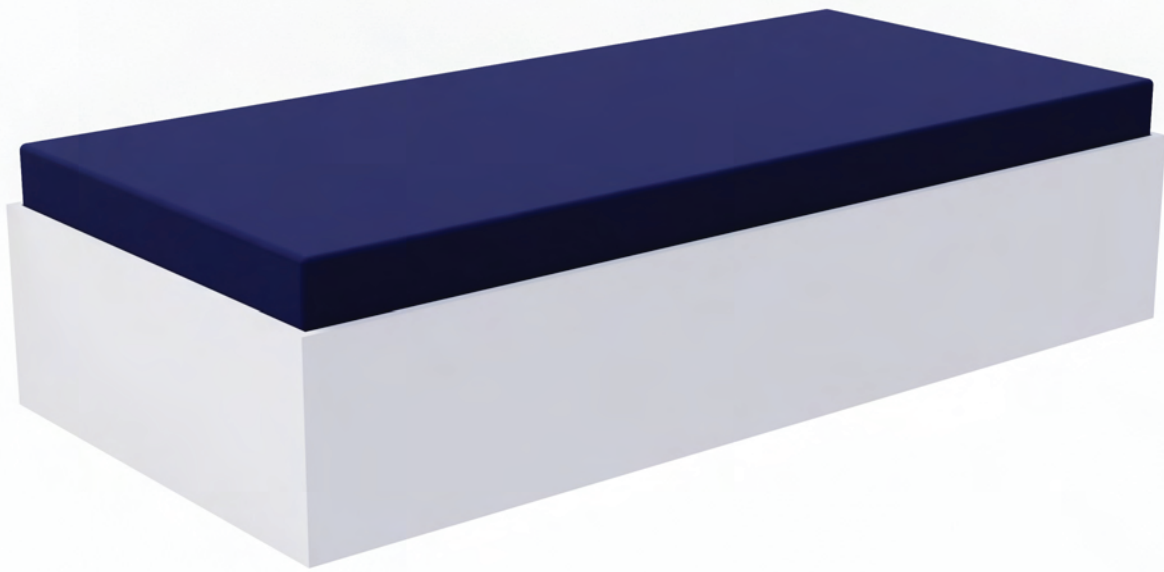


# *WatchPod Bed*

## Product Specifications



### **Construction**

- Cabinet is constructed of low pressure laminate over 20kg per cubic ft. 2cm thick melamine.
- All edges are sealed with PVC edgbanding for protection and to prevent liquid absorption and offgassing

### **Features**

- K-D fasteners allow for components to be easily replaced in the field
- Bed comes fully assembled
- Bed includes a full 2cm platform to support mattress.
- Mattress sold separately



**HEAD OFFICE:** Level 1, 1 Queens Road, Melbourne VIC 3004  
**MELBOURNE:** 62 Barrie Rd, Tullamarine VIC 3043  
**SYDNEY:** 1 Bearing Rd, Seven Hills NSW 2147  
**BRISBANE:** 4/7 Lathe St, Virginia QLD 4014  
**ADELAIDE:** 60 Wing St, Wingfield SA 5013  
**PERTH:** 14 Somersby Rd, Welshpool WA 6106